

PLAT of FRED KELLER, TRUSTEE

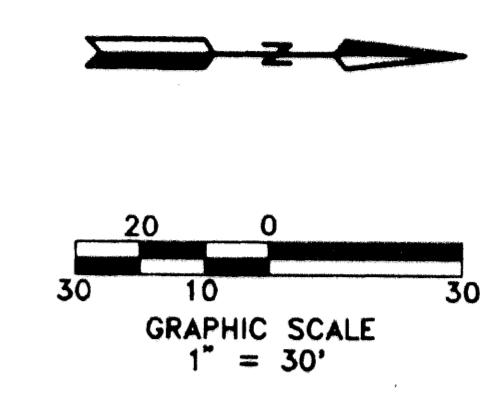
BEING A PORTION OF THE NE 1/4 OF SECTION 36, TOWNSHIP 42 SOUTH,
RANGE 42 EAST, CITY OF RIVIERA BEACH, PALM BEACH COUNTY, FLORIDA
AND BEING A RE-PLAT OF A PORTION OF "TRACT F, PLAT NO. 3 WESTROADS
BUSINESS AND INDUSTRIAL PARK" ACCORDING TO THE PLAT THEREOF, AS RECORDED
IN PLAT BOOK 30, PAGES 145 & 146, PUBLIC RECORDS PALM BEACH COUNTY, FLORIDA.

FEBRUARY 1997

SHEET 2 of 2

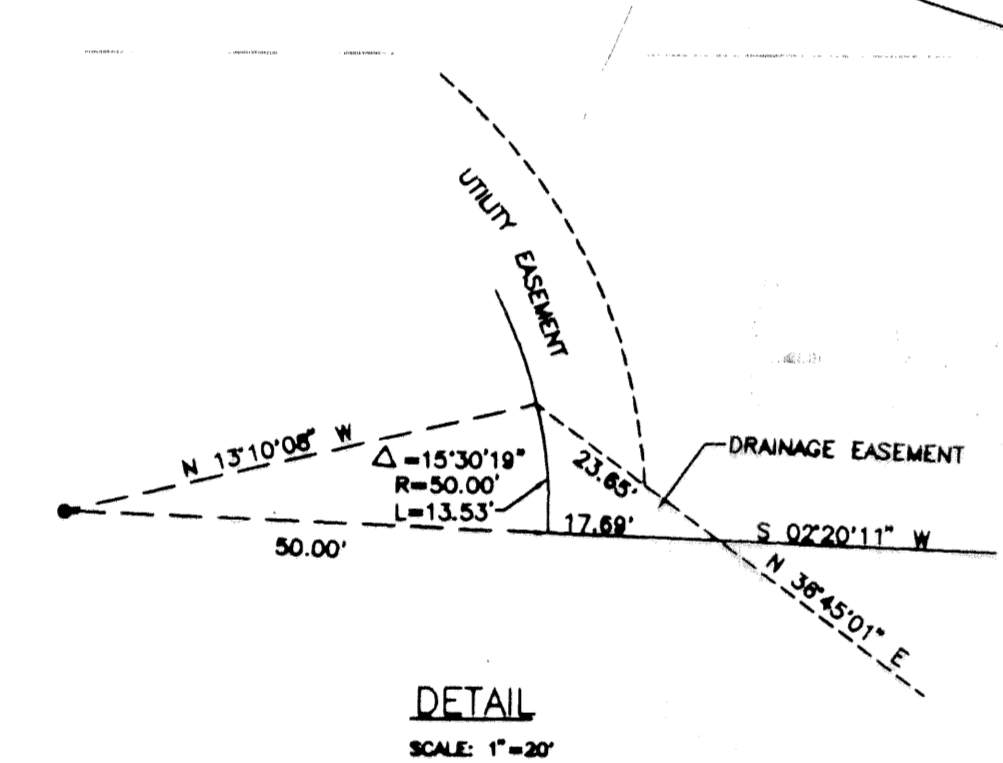
101

STATE OF FLORIDA }
COUNTY OF PALM BEACH } SS
THIS PLAT WAS FILED FOR RECORD AT _____ DAY OF _____ A.D., 1997 AND DULY
RECORDED IN PLAT BOOK _____ ON PAGES _____ THROUGH _____
DOROTHY H. WILKEN
CLERK OF THE CIRCUIT COURT
BY: _____ DEPUTY CLERK



WESTROADS BUSINESS & INDUSTRIAL PARK
PLAT #2 - TRACT D
(PLAT BOOK 29)
(PAGES 193)

WESTROADS BUSINESS & INDUSTRIAL PARK
PLAT #3 - TRACT F
(PLAT BOOK 30)
(PAGES 145, 146)



- LEGEND:**
- P.C.P. PERMANENT CONTROL POINT
 - Δ DELTA ANGLE
 - R RADIUS
 - L ARC LENGTH
 - € CENTERLINE
 - 42nd FORTY-SECOND
 - N NORTH
 - S SOUTH
 - E EAST
 - W WEST

- SURVEYOR'S NOTES:**
- BEARINGS SHOWN HEREON ARE REFERENCED TO PLAT NO. 3 - WESTROADS BUSINESS & INDUSTRIAL PARK AS RECORDED IN PLAT BOOK 30, PAGES 145 & 146 IN THE OFFICE OF THE CLERK OF THE COURT, IN AND FOR PALM BEACH COUNTY, FLORIDA.
 - PRM PERMANENT REFERENCE MONUMENT FOUND.
 - PRM PERMANENT REFERENCE MONUMENT SET.
 - PCP PERMANENT CONTROL POINT SET.
 - PCP PERMANENT CONTROL POINT FOUND.
 6. LINES WHICH INTERSECT CURVES ARE RADIAL UNLESS OTHERWISE NOTED.
 7. IN THOSE INSTANCES WHERE UTILITY/DRAINAGE STRUCTURES ARE CONSTRUCTED IN CONFLICT WITH THE PLATTED PERMANENT CONTROL POINTS (P.C.P.) POSITIONS, STRADDLERS MONUMENTED AS PERMANENT CONTROL POINTS WILL BE SET TO REFERENCE THE PLATTED PERMANENT CONTROL POINT POSITIONS.
 8. NOTICE: THERE MAY BE ADDITIONAL RESTRICTIONS, NOT FOUND ON THIS PLAT, THAT MAY BE FOUND IN THE PUBLIC RECORDS OF PALM BEACH COUNTY, FLORIDA.
 9. BUILDING SETBACKS SHALL CONFORM TO THE CITY OF RIVIERA BEACH DEVELOPMENT CODE.
 10. THERE SHALL BE NO BUILDINGS, STRUCTURES, CONSTRUCTION OF ANY KIND, TREE OR SHRUBS PLACED ON THE EASEMENTS, AS SHOWN HEREON.

THIS INSTRUMENT PREPARED BY:
WILLIAM D. O'CONNOR
PROFESSIONAL SURVEYOR & MAPPER,
IN & FOR THE OFFICE OF:

JAMES E. NEUHAUS, INC.,
11911 U.S. HIGHWAY ONE, SUITE 120
PALM BEACH GARDENS, FLORIDA 33408
(407) 622-1300

PLAT of FRED KELLER, TRUSTEE

DWN: KAD	F.B.: M-123	PG.: 35,36	DATE: 4/1/96
CRD: RMJ	FILE: 88-016	SCALE: 1"=30'	SHEET: 2 OF 2

SUBDIVISION * Fred Keller, Trustee
BOOK 79 PAGE 101 FLOOD MAP *
QUAD * ZONING *
SE * ZIP CODE *
PID NAME City of Riviera Beach

